



field trip guide

inclusion

preschool

k-3 • 4-5

learning framework

explore
&more

THE RALPH C. WILSON, JR.
CHILDREN'S MUSEUM

learning

Embark on a learning adventure! Engage eager learners during a hands-on field trip to Explore & More - The Ralph C. Wilson, Jr. Children's Museum. Our immersive play zones were designed with your group's needs, curriculum, and interests in mind. Field trips to Explore & More will spark curiosity, imagination, and wonder in your students.

Groups of 10 or more paying visitors with advance reservation will receive a group rate. Should individuals in your group have special needs that require support or accommodations, please let us know at the time of booking. Dates and times fill up quickly, so book early!

The fastest way to request your group visit is to fill out the inquiry form on our website.

We will contact you as quickly as possible to confirm your field trip and discuss the details of your visit. If you have questions or concerns, please do not hesitate to email us at

bookings@exploreandmore.org.

take learning to another level!

access & inclusion 3

plan your visit & lunch 4

lunch, bus, price &
activity information 5

preschool 6-7

k-3 8-9

4-5 10-11

learning framework 12





Explore & More believes that successful inclusion is an ongoing learning process that requires an organizational commitment to meet the diverse needs of the community. We strive to embed inclusive practices into all areas of the museum including providing fully accessible exhibits, accommodations and specialized programming for children with disabilities.

We welcome groups to call ahead if you have any questions, suggestions or concerns related to accessibility. Contact us by phone at (716) 655-5131 ext. 7081 or by email at accessibility@exploreandmore.org to speak to our Access & Inclusion Specialist.



Upon request, sensory friendly backpacks can be checked out at the admissions desk. Sensory backpacks are designed to enhance the museum experience for children with sensory processing needs. Backpacks contain noise canceling headphones, sensory tools, fidgets, mindfulness resources, and visual supports.

Children who feel overstimulated or just need a break during their visit can utilize our Quiet Coves. These sensory friendly rooms contain calming sensory elements such as special lighting and seating, bubble tubes, fidget



tools, toys, and books. The rooms are private and perfect for nursing/feeding infants. Quiet Coves are located on the second floor inside our Moving Water Play Zone, and the fourth floor across from our Person Centered Services Community Treehouse exhibit.

Explore & More partnered with Mason's Mission to build **WNY's first fully inclusive indoor playground**. This unique play space is intergenerational and supports both children and adults with mobility needs.

Our building is fully accessible with outdoor ramps and exhibits are accessible with elevator access to all four floors.

There are wheelchair accessible restrooms on each floor. A universal changing table is located on the second floor. This table can be used for both children and adults up to 250 pounds.

Our **Community Treehouse sponsored by Person Centered Services** on the fourth floor has a wheelchair lift for accessibility to the upper play space. Please ask a staff member for assistance.

For a quieter fieldtrip experience we recommend booking an afternoon time slot. The museum is generally less busy on weekday afternoons.



reservations required

group size

This map illustrates the Harbor Center area in Buffalo, NY, highlighting streets, landmarks, and transit options. The Buffalo River is shown on the left, with the Buffalo & Erie County Naval and Military Park nearby. Key streets include Perry Boulevard, Lower Terrace, Pearl Street, Commercial Street, Shawly Avenue, Marine Drive, Main Street, Washington Street, Scott Street, Perry Street, and South Park Ave. Landmarks such as the Harbor Center, Key Bank Center, HSBC Atrium, Buffalo News, and various hotels (Courtyard Marriott, One Canalside) are marked. Transit options are indicated by icons: a red 'P' for nearby parking, a blue circle with a white 'M' for the Metro Rail Station, a purple circle with a white bus icon for bus pull-up locations, and a blue circle with a white wheelchair icon for accessible entrances. A compass rose is located in the top left corner.

explore&more

- P** nearby parking
- M** metro rail station
- bus** bus pull up
- wheelchair** accessible entrance

We all know learning works best on a full tummy—so you may want to plan for it and make prior arrangements! Our Gathering Hall can accommodate up to 30 visitors. Food can be purchased from the museum's onsite Low Bridge Cafe by M&T Bank. Title I schools are allowed to bring in bagged lunches with special arrangements made with staff at the time of reservation. A cleaning fee of \$50 will be assessed. Room reservation is required. If you are interested in having lunch at the museum, please specify when speaking with a bookings coordinator. Explore & More does not provide a space for picnic lunches. Groups are encouraged to find locations to enjoy lunch at nearby parks or public areas (Canalside) if the lunchroom area is not available to reserve.

buses at explore & more

Large groups visiting Explore & More on buses are asked to load and unload on the side of the Explore & More museum along Main Street - there will be signage indicating where exactly to stop. Thanks to the generous sponsorship from our friends at the Niagara Frontier Automobile Dealers Association (NFADA), Explore & More is able to offer up to \$300 toward the bus cost for groups who visit the museum from qualifying schools. Call today to find out more!

pricing

Group Visits: \$8/person

Group Visits & Workshop: \$13/child; \$8/adults

Group visits are by reservation only. Teachers and chaperones are admitted free of charge with a recommended chaperone per five students. Parents, teachers, or adult caregivers over 18 years old qualify as chaperones. Adults in excess of that amount will be charged the group rate. Museum membership does not qualify towards group admission.



During your visit, you can also choose to add a focused workshop activity of your choice that is tied to our Play Zones and tailored to your student's needs, their curriculum and New York State Next Generation Learning Standards. On-Staff educators offer a variety of grade appropriate custom materials and activities to support your educational objectives.



preschool

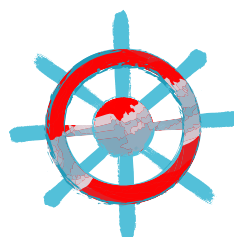


being good neighbors

PRESENTED BY
The Paul A. Saffrin Foundation

Visitors can take a walk through **Being Good Neighbors** and discover a community connected to one another and to their own distinct cultures. Two houses, feature unique furnishings, decorations and traditions common to a specific culture. The interiors will change to celebrate the cultures in our community. Here students can learn about their neighbors and neighborhoods.

ELA PKL4
Arts VA:Cr2.3.PK
PSKL1, VA:CR1.1PK, VA:Cn11.2.PK,
TH:Cr1.1.PK



moving water

PRESENTED BY
New York Power Authority

In **Moving Water** (built on the historic footprint of the Prime Slip), students and families celebrate the history and significance of the Buffalo waterways. Visitors follow the waterways through time and through the Canal District as they carry boats, move people, and power Buffalo. An iconic multi-story waterfall cascades down into a water table where students of all ages learn about the Erie Canal, how locks work, and how electricity is produced. A large visitor-powered water wheel illustrates that moving water is power as visitors compare the amount of energy they can produce individually and together to power the wheel and light up a photograph of Buffalo's 1901 Pan American Exposition.

ELA PKSL2
Science P-PS2-1, PSKL1
Arts VA:CR1.1PK,
VA:Cn11.2.PK, TH:Cr1.1.PK



playing together

PRESENTED BY
Delaware North
New Era Cap Company
The Buffalo Sabres Foundation

Students can run, move, play, and be a part of the professional sports teams that make Buffalo great in **Playing Together**. Getting people moving is a vital component to establishing healthy lifestyles long term. The merging of a giant game room with a wide range of physical experiences will ensure fun for all ages.

ELA PKL4, PSKL1,
Arts VA:CR1.1PK, VA:Cn11.2.PK,
TH:Cr1.1.PK

All play zones support the following Pre-K standards:

PSKL1 – Participate in collaborative conversations with diverse peers and adults in small and large groups and during play.

VA:CR1.1.PK – Engage in self-directed imaginative play with materials.

VA:Cn11.2.PK – Imagine and invent through guided play.

TH:Cr1.1.PK – With prompting and support, transition between imagination and reality in dramatic play.



learning, caring, healing

PRESENTED BY
John R. Oishei
Student's Hospital

In **Learning, Caring, Healing** students have an opportunity to dress-up in lab coats and take their “plush” patients to examination beds, a small-scale replica X-ray machine and MRI station. This play zone helps students learn more about their bodies, the role of doctors and researchers, and that hospitals are places for healing. The zone may inspire some students, later in life, to consider careers in research and health care. The exhibit is also intended to de-escalate the trauma students sometimes experience when visiting the doctor's office or a hospital.

ELA PKL4, PSKL1
Arts VA:CR1.1PK, VA:Cn11.2.PK,
TH:Cr1.1.PK

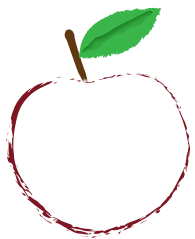


building buffalo

PRESENTED BY
Anonymous Donor

Buffalo's storied architectural history and current trends will inspire students and families to construct their own great edifices in **Building Buffalo**. A variety of building experiences both big and small will encourage collaboration among museum visitors to solve architectural challenges. Immersing students in the middle of a building project will help to cultivate the next great generation of architects, builders, and urban planners.

ELA PKL4, PSKL1,
Math NY-PK.MD.1, NY-PK.G.1
Arts VA:CR1.1PK, VA:Cn11.2.PK,
TH:Cr1.1.PK



farm to fork

PRESENTED BY
Wegmans

Farm to Fork uses Buffalo's rich agricultural history to show students where our food comes from with sustainable farming. They'll learn how to plant, grow, harvest, load a small-scale truck to take produce to market, sell, shop for and prepare healthy meals in this play area that merges a farm, farmer's market, and authentic kitchen.

ELA PKL4
Science P-LS1-1
Arts VA:CR1.1PK, VA:Cn11.2.PK,
TH:Cr1.1.PK



add a workshop activity

ADDITIONAL \$5/STUDENT

To enhance your pre-school museum visit, add on an extra educational workshop. The students in your group will engage in developmentally appropriate activities to practice readiness skills. Play games, create an art project, listen to a story and engage in hands-on activities to practice and strengthen skill levels.

Choose from the following as your educational extra:

- **Marching Through the ABC's**
- **It Makes “Sense” - Explore the FIVE senses**
- **The Very Hungry Caterpillar**

Art: VA:Cr3.1.PK, VA:Cr3.1.K, VA:Cr3.1.1, A:Cr2.3.PK, VA:Cr2.2.PK, VA:Cr2.2.K, VA:Cr2.2.1, VA:Cr2.1.PK, VA:Cr2.1.K, VA:Cr2.1.1, VA:Pr5.1.PK,
Math: NY-PK.CC.1, NY-K.CC.1, NY-PK.CC.3, NY-K.CC.4, NY-PK.CC.4, NY-K.CC.5,
Reading: PKR1-9, PKR9, PKRF1, PKRF1a-g, PKRF3, PKRF3a

BOOK YOUR PROGRAM TODAY!

ONLINE Complete our online reservation request form and our Group Sales Coordinator will contact you

PHONE Call 716-655-5131, option 3 to schedule your school or group's reservation.

EMAIL Contact our Group Sales Coordinator at bookings@exploreandmore.org

k-3



being good neighbors

PRESENTED BY
The Paul A. Saffrin Foundation

Visitors can take a walk through **Being Good Neighbors** and discover a community connected to one another and to their own distinct cultures. Two houses, feature unique furnishings, decorations and traditions common to a specific culture. The interiors will change to celebrate the cultures in our community. Here students can learn about their neighbors and neighborhoods.

SOC K.2, K.3, 1.3, 1.8b, 2.2, 3.4, 3.5
ELA KSL4, 1SL5, 2SL1, 2SL4, 3SL1, 3SL5
Arts VA:Cr1.1.K, TH:Cr1.1.Ka, VA:Cr1.1



moving water

PRESENTED BY
New York Power Authority

In **Moving Water** (built on the historic footprint of the Prime Slip), students and families celebrate the history and significance of the Buffalo waterways. Visitors follow the waterways through time and through the Canal District as they carry boats, move people, and power Buffalo. An iconic multi-story waterfall cascades down into a water table where students of all ages learn about the Erie Canal, how locks work, and how electricity is produced. A large visitor-powered water wheel illustrates that moving water is power as visitors compare the amount of energy they can produce individually and together to power the wheel and light up a photograph of Buffalo's 1901 Pan American Exposition.

ELA KR7, KSL1, 1SL1, 2SL1, 3RF4
Soc K.8, 1.6b, 1.8, 2.6, 3.3
Science K-PS2-1, 2-PS1-3, 3-PS2-1
Arts VA:Cr1.1.K, TH:Cr1.1.Ka, VA:Cr1.1.1



playing together

PRESENTED BY
Delaware North
New Era Cap Company
The Buffalo Sabres Foundation

Students can run, move, play, and be a part of the professional sports teams that make Buffalo great in **Playing Together**. In addition to learning the importance of a healthy, active lifestyle, students will foster social emotional skills and learn to work together as a team!

ELA KSL1, 1SL1, 2SL1
Soc 1.2, 3.4
Arts VA:Cr1.1.K, TH:Cr1.1.Ka, VA:Cr1.1

add a workshop activity

ADDITIONAL \$5/STUDENT

Looking to add more to your field trip? Visiting groups can expand educational opportunities by adding on a Culture Workshop. Workshops will be tailored to elementary students and provide added enrichment for participants. Culture workshops will foster learning experiences related to cultural identity and histories, while also supporting New York State's social studies curriculum.

Social Studies: 1.1b, 1.6b, 3.3a, 3.3b (Buffalo Hide)
Art: CR 1.2.3.PK-5, VA: PR 5.PK-5 Social Studies – 6.1a, 6.1b. (Ukraine)
Art CR 1.2.3.PK-5 VA: PR 5.PK-5 Social Studies K.2bc, K.3a, K.8b, 1.1bc, 1.8b, 2.2ab, 2.6b, 3.4ab (Pinata)
Art VA: CR 1.2.3.PK-5, VA: PR 5.PK-5 Social Studies K.2bc, K.3a, K.8b, 1.1bc, 1.8b, 2.2ab, 2.6b, 3.4ab (Taino Clay)



learning, caring, healing

PRESENTED BY
John R. Oishei
Student's Hospital

In **Learning, Caring, Healing** students have an opportunity to dress-up in lab coats and take their “plush” patients to examination beds, a small-scale replica X-ray machine and MRI station. This play zone helps students learn more about their bodies, the role of doctors and researchers, and that hospitals are places for healing. The zone may inspire some students, later in life, to consider careers in research and health care. The exhibit is also intended to de-escalate the trauma students sometimes experience when visiting the doctor’s office or a hospital.

ELA KSL1, 1SL1, 2SL1
Math NY-1.MD.2 Soc 2.9,
Science K-2-ETS1-1
Arts VA:Cr1.1.K, TH:Cr1.1.Ka, VA:Cr1.1

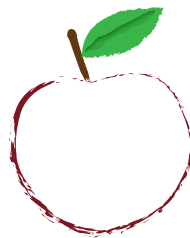


building buffalo

PRESENTED BY
Anonymous Donor

Buffalo’s storied architectural history and current trends will inspire students and families to construct their own great edifices in **Building Buffalo**. A variety of building experiences both big and small will encourage collaboration among museum visitors to solve architectural challenges. Immersing students in the middle of a building project will help to cultivate the next great generation of architects, builders, and urban planners.

ELA KSL1, 1SL1, 2SL1, 3RF4
Math NY-K.MD.1, NY-K.G.5, NY-1.MD.2,
NY-1.G.2, NY-2.MD.3
Arts VA:Cr1.2.2
Soc K.6, 1.5, 1.6b
Science 2-PS1-3, K-2-ETS1-1, K-2-ETS1-2



farm to fork

PRESENTED BY
Wegmans

Farm to Fork uses Buffalo’s rich agricultural history to show students where our food comes from with sustainable farming. They’ll learn how to plant, grow, harvest, load a small-scale truck to take produce to market, sell, shop for and prepare healthy meals in this play area that merges a farm, farmer’s market, and authentic kitchen.

ELA KSL1, 1SL1, 2SL1
Math NY-K.MD.4, NY-1.MD.3b
Soc K.9a, 1.10, 2.5, 3.3
Science K-ESS2-1, 1-LS1-1, 3-LS4-4

All play zones support the following Kindergarten standards:

VA:Cr1.1.K – Engage in exploration and imaginative play with materials.

TH:Cr1.1.Ka – With prompting and support, invent and inhabit an imaginary elsewhere in dramatic play.

All play zones support the following 1st Grade standards:

VA:Cr1.1.1 – Engage collaboratively in exploration and imaginative play with materials.

All play zones support the following 2nd Grade standards:

2.AL.1. – Engages in cooperative, purposeful and interactive play and activities that enhance learning and encourage exploration.

2.SOC.3. – Recognizes people share similarities and differences with others in their own community and other communities.

All play zones support the following 3rd Grade standards:

3SL1 – Participate and engage in a range of collaborative discussions with diverse peers and adults, expressing ideas clearly, and building on those of others.

4-5

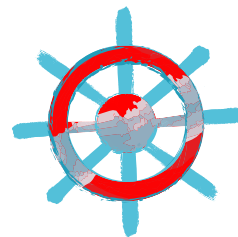


being good neighbors

PRESENTED BY
The Paul A. Saffrin Foundation

Visitors can take a walk through **Being Good Neighbors** and discover a community connected to one another and to their own distinct cultures. Two houses, feature unique furnishings, decorations and traditions common to a specific culture. The interiors will change to celebrate the cultures in our community. Here students can learn about their neighbors and neighborhoods.

Soc 4.2, 4.7, 5.1, 5.5
ELA 4RF4, 4SL1, 4R9, 5RF4, 5SL1
Arts VA:Cn11.1.4, VA:Cn11.1.5, VA:Re7.2.5



moving water

PRESENTED BY
New York Power Authority

In **Moving Water** (built on the historic footprint of the Prime Slip), students and families celebrate the history and significance of the Buffalo waterways. Visitors follow the waterways through time and through the Canal District as they carry boats, move people, and power Buffalo. An iconic multi-story waterfall cascades down into a water table where students of all ages learn about the Erie Canal, how locks work, and how electricity is produced. A large visitor-powered water wheel illustrates that moving water is power as visitors compare the amount of energy they can produce individually and together to power the wheel and light up a photograph of Buffalo's 1901 Pan American Exposition.

ELA 4RF4
Soc 4.1, 4.6, 5.7
Science 3-5-ETS1-3



building buffalo

PRESENTED BY
Anonymous Donor

Buffalo's storied architectural history and current trends will inspire students and families to construct their own great edifices in **Building Buffalo**. A variety of building experiences both big and small will encourage collaboration among museum visitors to solve architectural challenges. Immersing students in the middle of a building project will help to cultivate the next great generation of architects, builders, and urban planners.

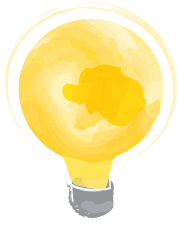
ELA 4R7 Math NY-4.MD.1
Arts VA:Cr2.3.4, VA:Cr2.3.4
Soc 4.1 Science 4-ESS2-2, 3-5-ETS1-1, 3-5-ETS1-3

All play zones support the following 4th Grade standards:

4SL1 – Engage effectively in a range of collaborative discussions with diverse partners, expressing ideas clearly, and building on those of others.

All play zones support the following 5th Grade standards:

5SL1 – Engage effectively in a range of collaborative discussions with diverse partners, expressing ideas clearly, and building on those of others.



lighting buffalo's imagination

PRESENTED BY
Crowdfunding Friends
Across WNY

In **Lighting Buffalo's Imagination**, visitors explore the materials, ideas, and innovations that have fueled Buffalo's prosperity and that continue to power new ideas through curiosity, imagination, and collaboration. The thousands of bright lights that illuminated the 1901 Pan-American Exposition inspired the gallery where students and adults illuminate their imaginations.

ELA 4R5, 5R7
Soc 4.6, 5.7
Science 3-5-ETS1-2

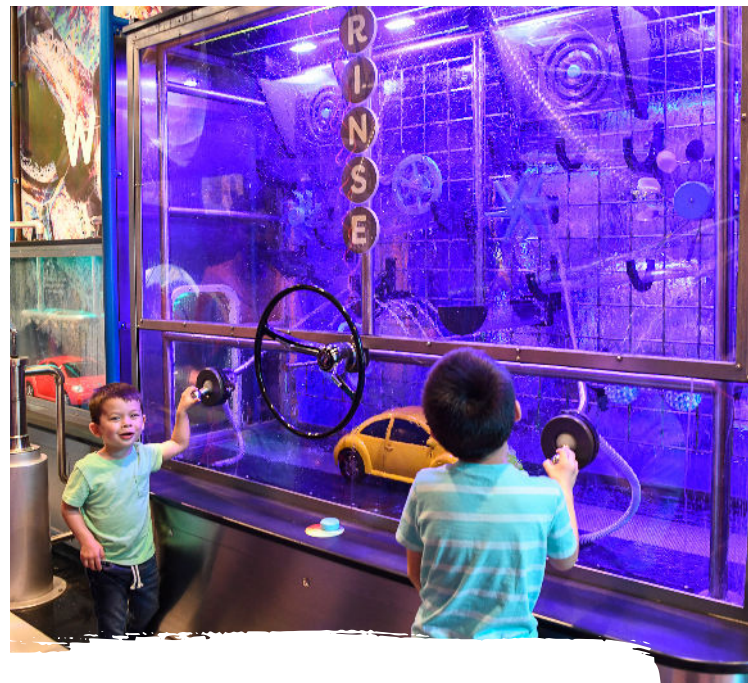


driving buffalo's dream

PRESENTED BY
West Herr
Automotive
Group

Creativity leads the way in our immersive Sketch Town exhibit where students can color a vehicle, scan it in, and "drive" it through a large-scale digital town, making art come to life in a fun and engaging way.

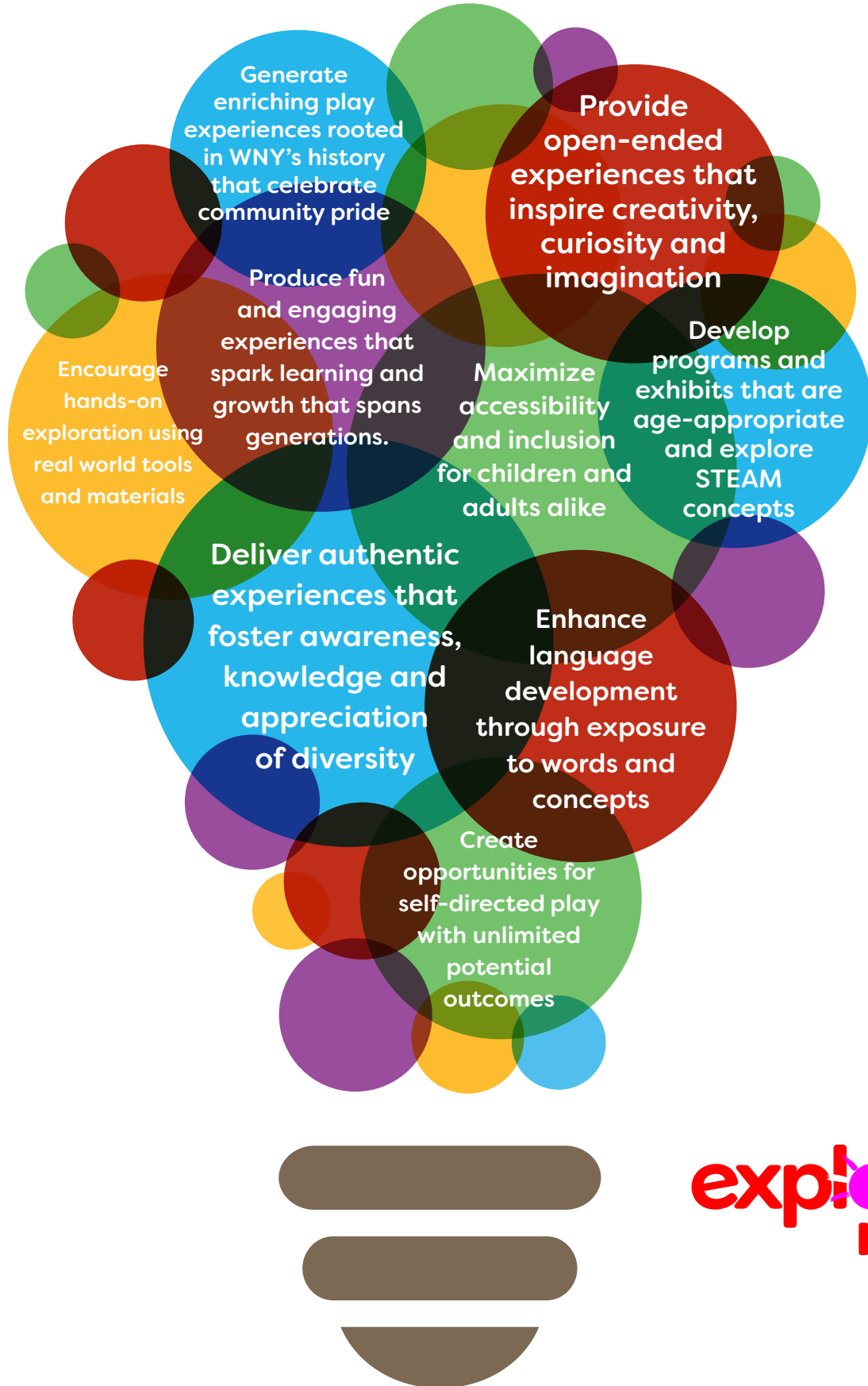
Arts VA:Cr2.3.4, VA:Cr2.3.4



ADDITIONAL \$5/STUDENT

Expand the educational opportunity for your elementary students on their next field trip to Explore and More! This workshop is designed by Explore and More's Lead STEM educator, and carefully crafted to appropriately fit each elementary grade level. This workshop utilizes the **Tinkering Tank**, Explore and More's very own maker space. Each student will be presented with a challenge and will construct a solution to make a successful outcome. This workshop is designed to support the following curriculum:
Science: NGSSK-2-ETS1-2 NGSSK-2-ETS1-3
NGSS3-5-ETS1-3

In order to provide best-in-class play experiences where all children, families and the community can explore, learn and develop together we strive to:



**explore
more**



explore & more

THE RALPH C. WILSON, JR.
CHILDREN'S MUSEUM

130 MAIN STREET | BUFFALO, NEW YORK 14202 | 716.655.5131 | exploreandmore.org