

NYS early learning guidelines



THE RALPH C. WILSON, JR. CHILDREN'S MUSEUM

Lighting Buffalo's Imagination

Lighting Buffalo's Imagination is where children and adults are inspired by people, their ideas, and new possibilities to investigate, imagine, and create, explore materials and media

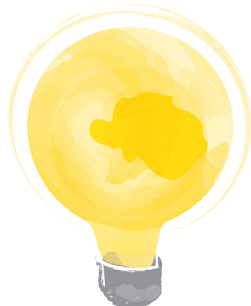
and their properties, and connect, collaborate, and share ideas with others.

Primary Learning Domain:

Exploring **STEM** concepts through hands-on experimentation

Secondary Learning Domains:

Developing and exploring an appreciation for the arts. Fostering a sense of **community** and **culture**.



Learning Category	0-1 years	1-3 years	3-5 years	5-7 years	7+ years
Social and Emotional Development	Interaction with Adults				
	Interaction with Peers				
	Adaptive Social Behavior			Self Concept	
Communication, Language, and Literacy	Vocabulary				
	Listening Skills				
	Reading and Writing				
Community and Culture	History				
	Community				
STEM	Technology				
	Critical and Analytic Thinking				
	Scientific Thinking			Measurement	
Arts/Arts Appreciation	Understanding and Appreciation				
	Analyze and Critique				
Physical Well-Being, Health, and Motor Development	Sensorimotor				
	Gross Motor				